

# ASSEMBLY AND WELDING TABLES FROM COMPOSING PLATES



## PLATE MATERIAL

- SPECIAL GRAY CAST IRON WITH PERFORATION DIAMETER 28 MM
- ANODIZED ALUMINUM



# 3D WELDING TABLE SYSTEM – PERFECT

## FOR WELDING STEEL AND STAINLESS STEEL

### ADVANTAGES OF TABLES OF PADDED PLATES.

- The use of composable plates significantly reduces the cost of the table at the expense of those.
- The working area of the table can be increased by placing the plates in a checkerboard pattern.
- You can order a table with an incomplete set of plates, this will significantly reduce the price of the table. Subsequently you can order the missing plates.
- If a separate plate is damaged, you can always replace it with a similar one.
- Linear accuracy of plates - 0.1 mm / m.
- You can independently change the location of the plates on the table.
- Reducing the time of manufacture and supply of tables due to the presence of plates.
- The modular table system allows you to completely disassemble the table, which will greatly facilitate the transportation of the table.

## CAST IRON TABLE

---

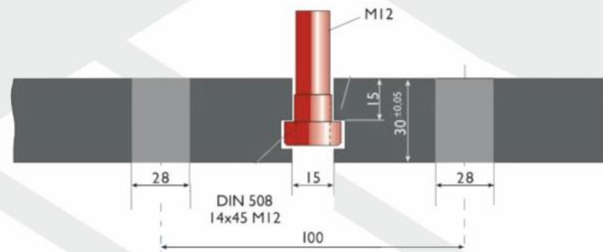


### WHY SPECIAL GRAY CAST IRON?

- For cast iron does not stick spatters.
- Gray cast iron has a minimum thermal conductivity - your table will not heat up and deform when the product is heated.
- High wear resistance of cast iron makes table life unlimited.
- Minimal deformation of cast iron during operation will provide rigidity and reliable support for the product.
- In the process of "aging" cast iron allocates graphite. This improves product gliding on the table and prevents molten metal spatter from sticking.
- The cast iron's porous structure absorbs non-stick sprays, which makes the table surface even more protected from sticking of scale and molten metal.
- Low noise level when loading the product on the cast-iron table.
- Table load capacity of cast-iron plates 1500 kg / m<sup>2</sup>.

## COMBINATION CLAMPING SYSTEM

THE FASTENING SYSTEM OF CLAMPING ACCESSORIES SLOT-STOL INCLUDES A WIDESPREAD T-SHAPED SYSTEM WITH A SLOT PITCH OF 100 MM AND A SYSTEM OF HOLES WITH A DIAMETER OF 28 MM WITH A PITCH OF 100 MM



- The combined system of fastening clamps and stops will allow you to use the equipment for the T-shaped slot and holes with a diameter of 28 mm
- T-shaped slot and the system holes  $\varnothing 28$  mm are the simplest and most common ways snap fastening
- The clamping attachment in the T-shaped version has two degrees of freedom, which makes it possible to move across the entire width of the table
- The functional surface of the groove is fully protected
- The fastening system in one continuous slot allows you to install the snap in one axis
- The system of holes  $\varnothing 28$  mm in diameter, will install the snap-in a fixed position, with 100 mm spacing
- The combined fastening system will allow you to use the equipment of most manufacturers, as well as the equipment of its own production

## ALUMINUM TABLE



### WHY ALUMINUM PROFILE WITH ANODIZED SURFACE?

- Dross and splashes of molten metal do not stick to aluminum.
- Aluminum has a high thermal conductivity - your product will cool faster.
- The surface of your product will always be clean and will not have any mechanical damage.
- Anodized aluminum tables are ideal for assembling and welding non-ferrous metals and stainless steel.
- Low noise level when loading the product on the table.
- Table load capacity of cast-iron plates 500 kg / m<sup>2</sup>.

---

## POSITIONERS FOR ASSEMBLING AND WELDING FRAMES



- SLOT-STOL tilters for assembling and welding frames from 2 sides with T-shaped grooves have the advantage of installing, fastening, assembling and welding various designs and parts.
- The tilter allows you to quickly and accurately in compliance with the right angles to set the length and width of various frames and weld them from all sides.
- The corners of the frames are located in a special snap-in and are available for welding from the bottom and top sides. The front left clamping angle forms the zero point of the axes X and Y.
- Tilter allows you to rotate the product by 360 degrees and weld the product from different sides.
- Pneumatic balancer facilitates product rotation.

## TABLES ON THE TRACK

---

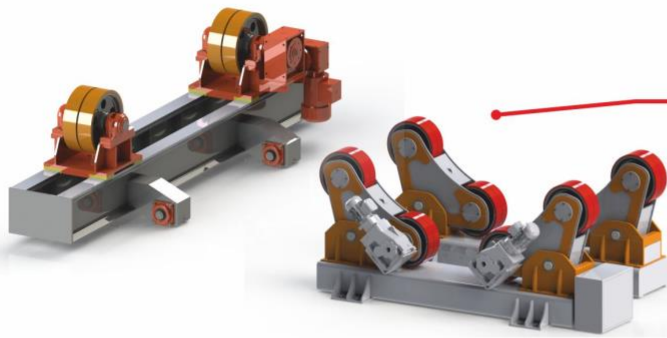


ASSEMBLY AND WELDING TABLES ON THE RAIL TRACK ARE WIDELY USED IN THE MANUFACTURE OF LARGE METAL STRUCTURES SUCH AS TRUSSES, CAR FRAMES, CARRIAGES, BRIDGES, CRANES, ETC.

- Unlimited track length
- The track is made of high-precision guides with linear bearings, the accuracy of the track - 0.2 mm / m.
- Sections of tables can be made of gray cast iron brand GG 25 or aluminum profile.
- The deviation from the flatness of the table 0.5 mm / m<sup>2</sup>.
- Loading capacity of gray iron tables - 1500 kg / m<sup>2</sup>.
- Loading capacity of tables made of aluminum - 500 kg / m<sup>2</sup>.
- Each section is equipped with a locking mechanism and a system of protection against overturning.
- The ability to install or remove sections of tables based on their production needs.

# WELDING ROTATORS AND POSITIONERS

---



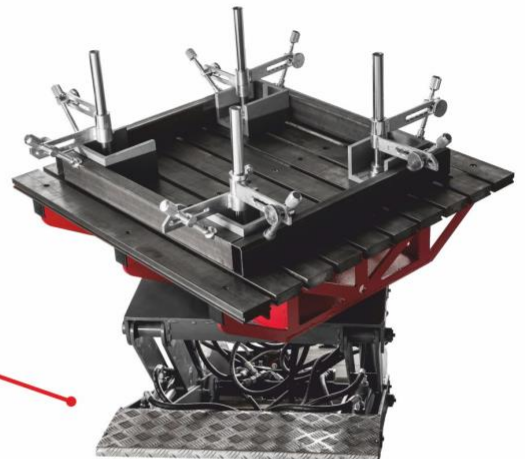
ROLLER ROTATORS

PIPE ROTATORS



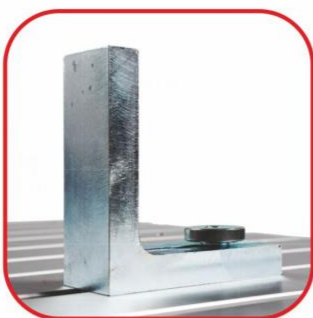
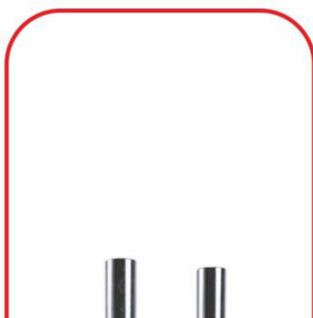
HEAD AND TAILSTOCK POSITIONERS

UNIVERSAL WELDING ROTATORS



SCISSOR LIFT TABLES

# CLAMPS AND STOPS



**SLOT**  
**STOL** 

☎ 8(495) 108 29 74 multichannel

@ sale@slot-stol.ru

🌐 www.slot-stol.ru  
www.intertechpribor.ru

