

**Full** SUPPORT & SERVICE

## Split Frame Machine

Bohyar always commits to providing customers with a full set of solutions for industrial pipeline service. We own professional equipment and service used for cutting, beveling, sealing and other kind of service, and can provide famous brands valves and materials. We devote our efforts to service for many fields such as the long distance pipeline, nuclear power plant, offshore engineering, pressure vessel and chemical plant.

**One-stop Service Solution for Industrial Pipeline**



BOYHAR is an emerging company in the World. We are the leading manufacturer of a clamshell style portable precision pipe cutting and beveling machine tools in today's market. We pride our self for an engineering design excellence and our innovative manufacturing facility to make a quality and tested product. Our dedicated team provides a comprehensive service such as pipeline detection, filed tube replacement, field leakage plugging, field engineering service and regular maintenance for customers. We serve many industries such as oil & gas, chemical industry, power plant, water & waste treatment plant, food manufacturer and pharmaceutical industry.

## Industries We Serve

### ● Energy Field

- Oil and Gas
- Pipeline Transmission, Gathering & Storage
- Petrochemistry
- Oil Refinery
- Offshore Engineering
- Power Plant



Oil and Gas



LNG



Power

### ● Construction and Construction Equipment

- Water and Gas
- Water and Treatment
- Heater



Water and Treatment



Boiler shop



Mining

### ● Process Engineering

- Chemical Industry
- Shipbuilding
- Boiler shop
- Semiconductor
- Electronic Equipment
- Medicine
- Biotechnology
- Food and Beverage Industry



Marine



Shipbuilding



Refinery and petrochemicals



## Quality Assurance

'The application of industrial products will never allow any defective product',Bohyar's management team has clear consensus of that and emphasizes not only by communication to associates but also by utilization of 3rd party and customer verification process.Bohyar implements zero defect quality management with advanced data statistics and analysis to continually improve the ability of process control and management.Addition to that,with the assistance of ERP system,the base materials and components used in every individual product are completely traceable.

- Bohyar conducts PMI and mechanical performance test for all in coming materials.
- Prior to and in the course of machining and processing of critical parts,process inspection & NDE inspection are conducted.
- Every product is strictly in-house tested before shipment.
- Our company regularly carry out quality management training to improve the quality awareness.



\*ISO9001certificate of registration



Quality management training



PMI and mechanical performance test



\*Practical new patent certificate

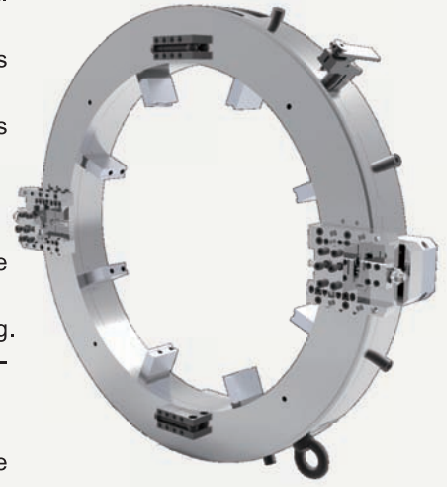


## Introduction

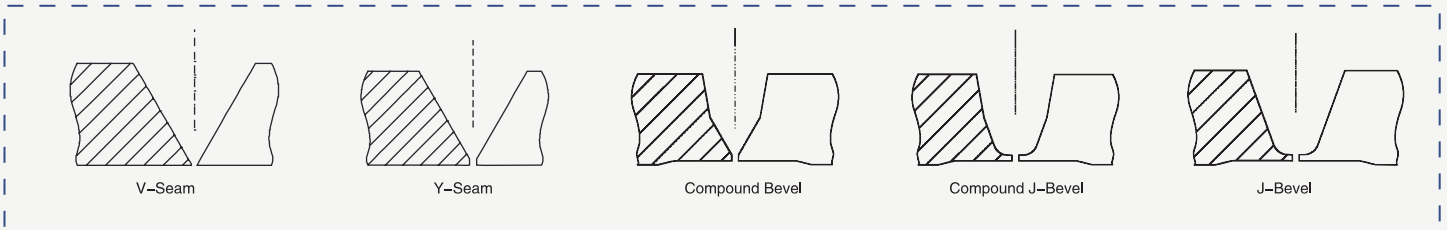
Products of SFM series are portable processing equipment for cutting, beveling and end prefabrication of various pipes, with which cutting and beveling can be conducted at the same time. With an R&D history of nearly one hundred years, the product can process pipes or casings accurately, continuously and vertically.

## Features

- It is in split frame structure, and can be quickly installed to any position of external wall of operational pipeline with its clamps, occupying small space.
- It can process pipes made from various grades of carbon steel, alloy steel, stainless steel and other metals.
- Fixed coils are made from aviation aluminum materials of high hardness, which is light and easy to construct.
- Completely cold cutting without changing the material of pipes.
- Equipped with precise machining tools, with high efficiency and long service life
- Multi-point pipe clamping system which can securely clamp the equipment onto the pipeline.
- Feed system offers low clearance operation with precise feed for controlled cutting.
- Low friction adjustable bearing system provides maximum stability and extended-machine life.
- Fully enclosed bearing and driving gear system for operational safety.
- Design of modular parts and accessories: various models of accessories can be used interchangeably.



## Beveling Type



\* Customized tools can be provided for processing bevels of other angles.





## Series Models and Parameters

Model	Pipe OD(in)	Wall thickness(mm)	Weight(kg)	Drive Versions
SFM0206	2"~6"	25	30	Pneumatic Hydraulic Electric
SFM0408	4"~8"	50	35	
SFM0612	6"~12"	60	40	
SFM0814	8"~14"	60	45	
SFM1218	12"~18"	80	55	
SFM1420	14"~20"	80	60	
SFM1824	18"~24"	80	70	
SFM2026	20"~26"	80	75	
SFM2430	24"~30"	80	85	Hydraulic
SFM2632	26"~32"	80	90	
SFM3036	30"~36"	80	105	
SFM3642	36"~42"	80	125	
SFM4248	42"~48"	80	150	
SFM4860	48"~60"	100	/	
SFM6072	60"~72"	100	/	
SFM7284	72"~84"	100	/	

## Technical Data

Specifications			
Cutting tool rotational speed	18m/min(60ft/min)		
Drive options	Pneumatic	Air requirements	1.7m <sup>3</sup> /min-6.2bar(65 ft <sup>3</sup> /min-90Psi)
	Hydraulic	Hydraulic requirements	31l/min-104bars(8 gal/min-1500 Psi)
	Electric	Electric requirements	220V/AC
Feed method	Star wheel system	Feed rate	Fixed 0.08 mm per trip
Finish	Anodizing sandblasting	Packaging	Aluminium alloy packing case

## Industry Application



Power Plant



Petrochemical



Boiler Shop



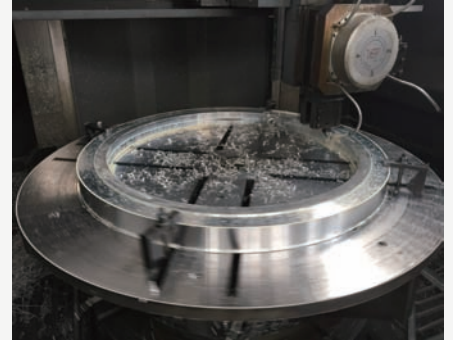
## Accessories (optional)



### RING SETS

It is provided for the users who have drive motors and tool slides to economically expand the application range of SFM products.

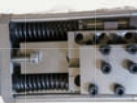
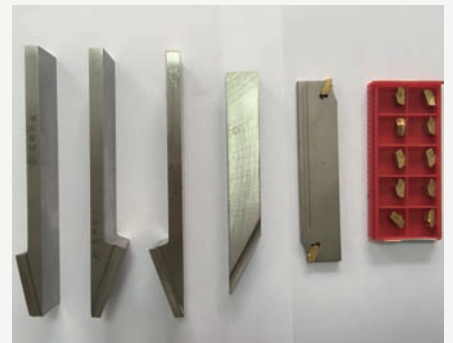
The shipments include: customized storage case, operating manuals and hand-operated tools.



### SFM TOOL SLIDES

Extended slides can be applied to SFM models 206 to 1420, with other sizes optional and stroke of 40.5 mm;

Super extended slides can be applied to SFM models 1824 and above, with other sizes optional and stroke of 52 mm, which can be used in large-size pipes and pipes with different wall thicknesses.



### O.D.TACKING SLIDE

It is used to track the surface of out-of-round pipes, which can greatly save installation, adjustment and cutting time. It can quickly and automatically track the system to ensure continuous truncated edge, and can even keep uniform wall thickness of large diameter counterbore when combined with counterbore slide.

## Standard Configuration

- Self squaring mounting system
- Customized storage case
- Operational tools
- Product Operating Manual
- Qualification test report



Storage Case

## Field Service



Marine



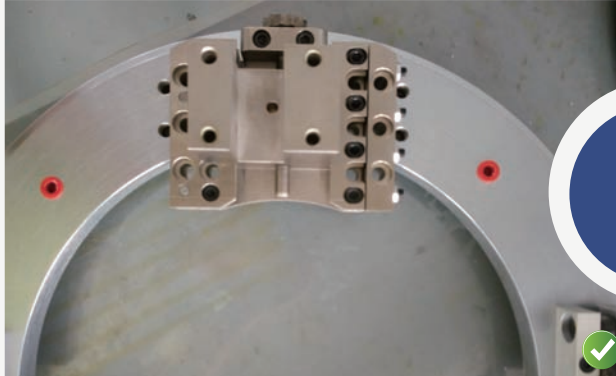
Pipe Prefabrication



Power

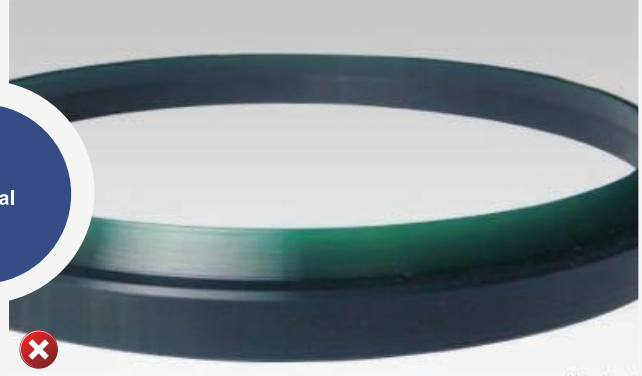


## Product Advantages

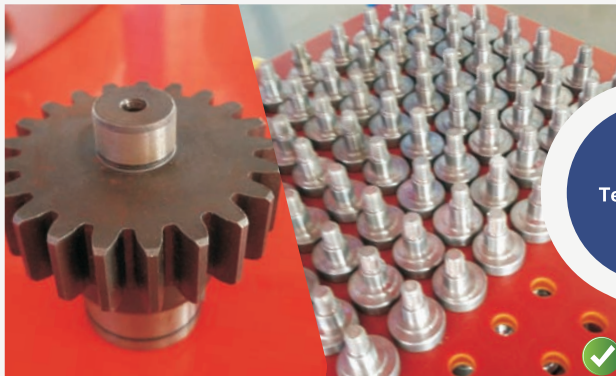


### Material

Fixed coils are made from light weight high-strength imported aviation aluminum with anodized surface, which looks better and does not easily fade; moving coils are made from die steel with chrome-plated surface, which is better than the conventional steel in mechanical properties; tool slides are made from die steel, with compact structure and small size.



Most fixed and moving coils in the industry are made from steel 45# with blackened surface. It is bulky and not durable, easy to fade and rust. Moreover, their tool slides are large and occupy large space.



### Technology

Eccentric shafts are produced with grinding process after quenching, which not only retains the toughness of the shaft, but also gets a high precision, high hardness and high surface smoothness. Gear shafts are made with grinding process after quenching to ensure the accuracy and hardness of the tooth surface, and the strength of the tooth root while grinding the mounting shaft on both ends. As a result, the gear shafts outperform other products in terms of mounting accuracy and gear precision and have less noise, more stable movement and longer service life.



Eccentric shafts are produced with conventional lathe processing and gear shafts are produced with common hobbing machining, with low accuracy, great noise, unstable operation, and easy to wear.

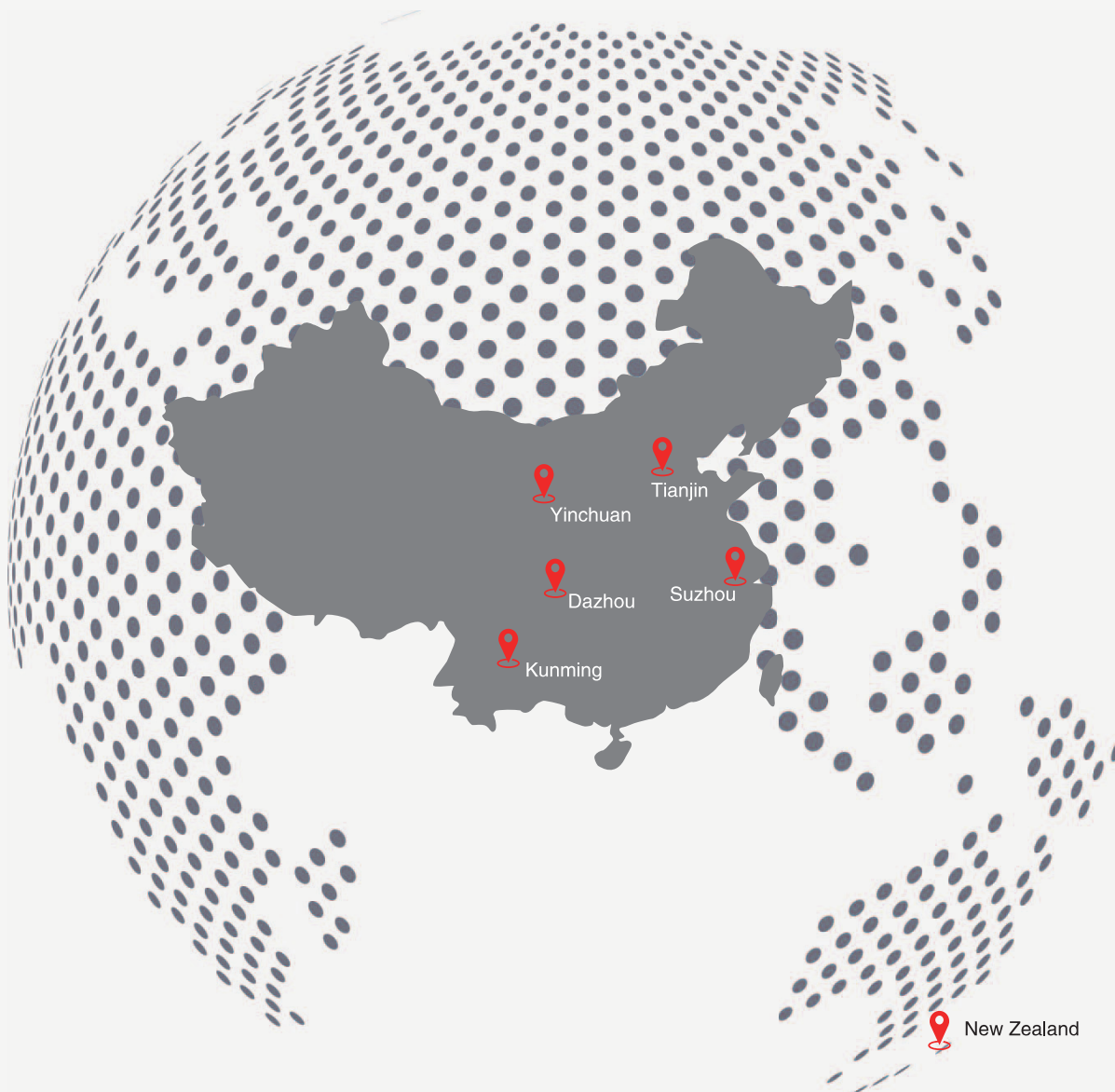


### Power

Three optional motors: Germany Metabo motor, imported pneumatic motor, and White hydraulic motor. They are powerful, stable, with small noise and long service life.



Using low price motors results in insufficient power, high temperature rising, easy burning, great noise and short service life. Using low price pneumatic motors leads to great noise, easy wearing and poor stability. Using low price hydraulic motors results in easy oil spill, poor heat resistance and unstable output.



Cat.no.: E-SFM-201501

**博合雅**

Bohyar Engineering Material Technology(suzhou)Co.,Ltd  
No.28B Datong Road,xuguan Town,Suzhou New District,P.R.China  
Tel: 86 512 66322686  
Fax: 86 512 66322591  
E-mail: sales@bohyar.com



Website



Wechat